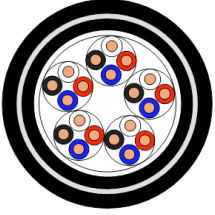
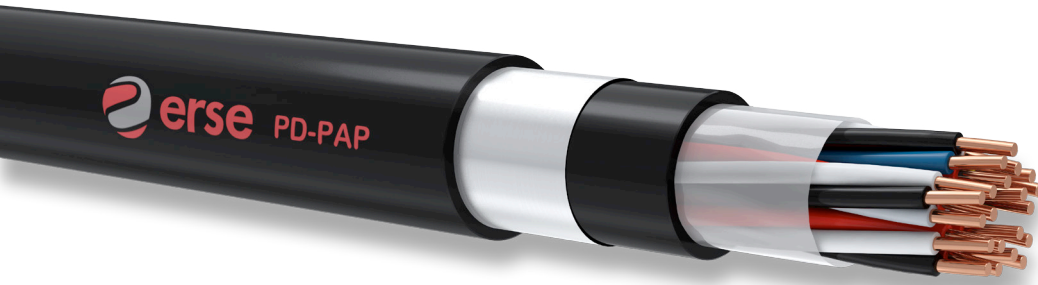


# PD-PAP



## KULLANIM ALANLARI

Bina dışı tesisatlarda;

- Telefon santralleri ve abone dağıtımlarında
- Sinyal ve data iletiminde

## KABLO YAPISI

<b>1-İletken</b>	IEC 60228; DIN VDE 0295; EN 60228 SINIF 1
<b>2-Yalıtkan</b>	SOLID PE KOMPAUND
<b>3-Yalıtım Renk</b>	TS EN 60708
<b>4-Ayırıcı Bant</b>	PES BANT
<b>5-İç Kılıf</b>	POLİETİLEN
<b>6-Ekran</b>	POLİETİLEN KAPLI ALÜMİNYUM FOLYO
<b>7-Dış Kılıf</b>	PE KOMPAUND
<b>8-Kılıf Rengi</b>	SİYAH

## TEKNİK ÖZELLİKLER TECHNICAL CHARACTERISTICS

ÇEVİRİM DİRENCİ LOOP RESISTANCE	YALITIM DİRENCİ INSULATION RESISTANCE	EFEKTİF KAPASİTE MUTUAL CAPACITANCE	ÇALIŞMA SICAKLIĞI TEMPERATURE RANGE	
mm	Ω/km	500 MΩxkm	nF/km (Max.)	- 30°C-+70°C
0,4	299		0,4 50	
0,5	189,7		0,5 50	
0,6	131,8		0,6 45	
0,9	58,6		0,9 45	

TEST VOLTAJİ (DC) TEST VOLTAGE(DC)	BÜKÜLME YARIÇAPI BENDING RADIUS	ÇALIŞMA GELİRİMİ OPERATING VOLTAGE	KAPASİTE DENGESİZLİĞİ CAPACITY UNBALANCE	TOPRAK DENGESİZLİĞİ EARTHING UNBALANCE
1000 V	15 X D	300 V	0,4 125 0,5 125 0,6 60 0,9 60	0,4 500 0,5 500 0,6 325 0,9 325

## APPLICATION

At outdoor installations;

- Telephone exchanges and subscriber distributions
- Signal and data transmission

## CONSTRUCTION

<b>1-Conductor</b>	IEC 60228; DIN VDE 0295; EN 60228 CLASS 1
<b>2-Insulation</b>	SOLID PE COMPOUND
<b>3-Colour Code</b>	TS EN 60708
<b>4-Wrapping</b>	PES TAPE
<b>5-Inner Sheath</b>	POLYTHLENE
<b>6-Screen</b>	PE-COATED ALUMINIUM FOIL
<b>7-Outer Sheath</b>	PE COMPOUND
<b>8-Sheath Colour</b>	BLACK

## NOTLAR NOTES

ESAS ALINAN STANDARTLAR VDE 0816/TS EN 60708  
BASED ON VDE 0816/TS EN 60708 STANDARDS